

Answer the following questions

Section A

1. The usual infective stage of Malaria to man is the
 - A) gametocytes
 - B) sporozoites
 - C) schizonts
 - D) merozoites

2. The habitat is the large intestine
 - A] Entamoeba gingivalis
 - B] Giardia lamblia
 - C] Entamoeba histolytica
 - D] Naegleria fowler

3. Disease resulting from infection with parasitic tapeworms belongs to teania species
 - A. Taenia Coliasis
 - B. Taeniasis
 - C. Cyticercosis

4. Host of Taenia Solium
 - A. Pigs
 - B. Humans
 - C. Both
 - D. None

5. Organ of attachment 4 suckers with hooklets

A. Onchospheres

B. Scolex

C. Strombila

6. The following may present with fever and diarrhoea

a. malaria

b. Entamoeba coli

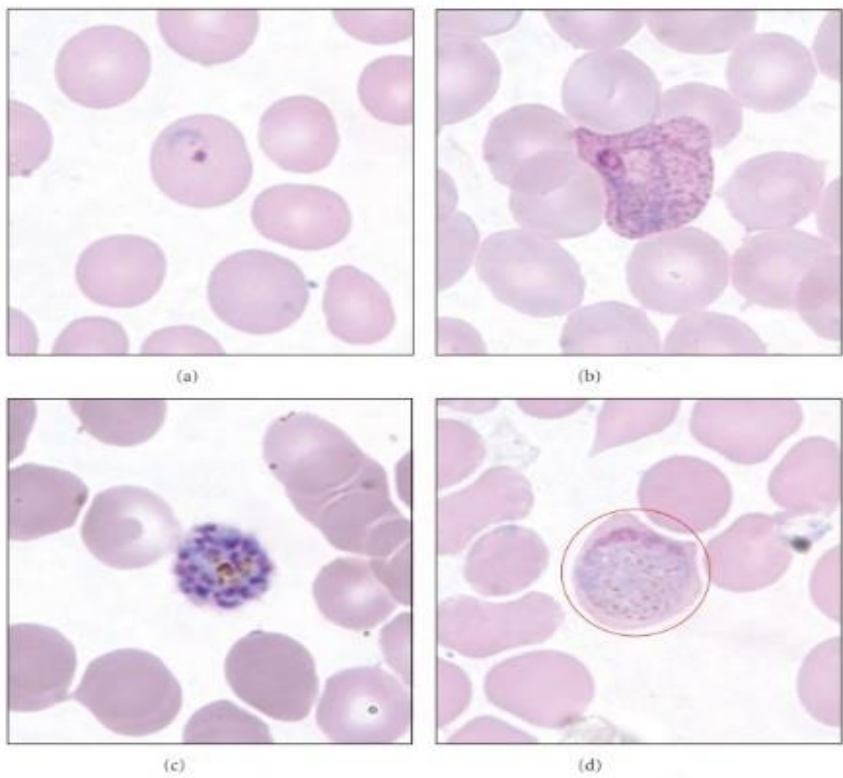
c. dengue

d. Campylobacter enteritis

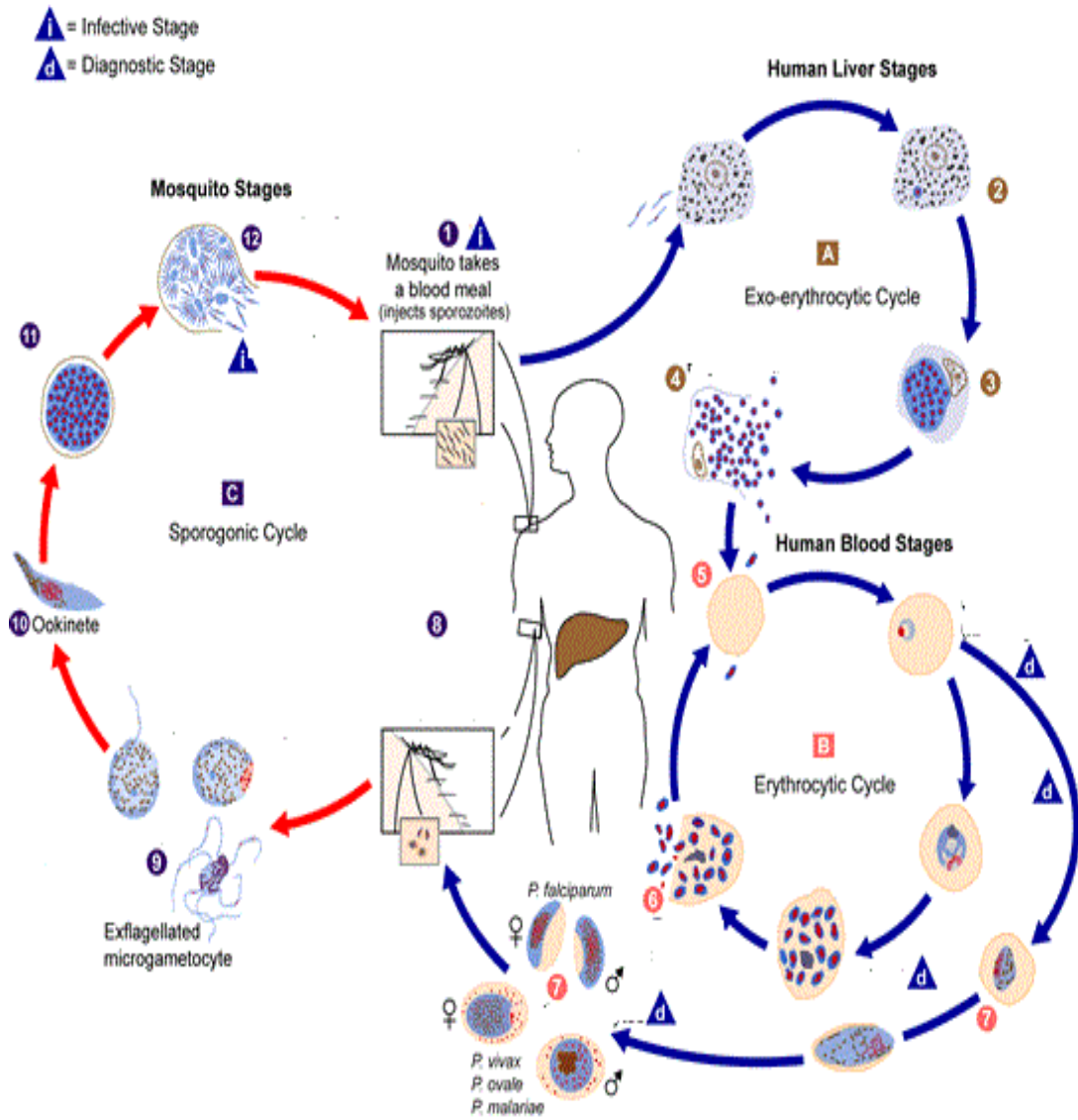
e. brucellosis

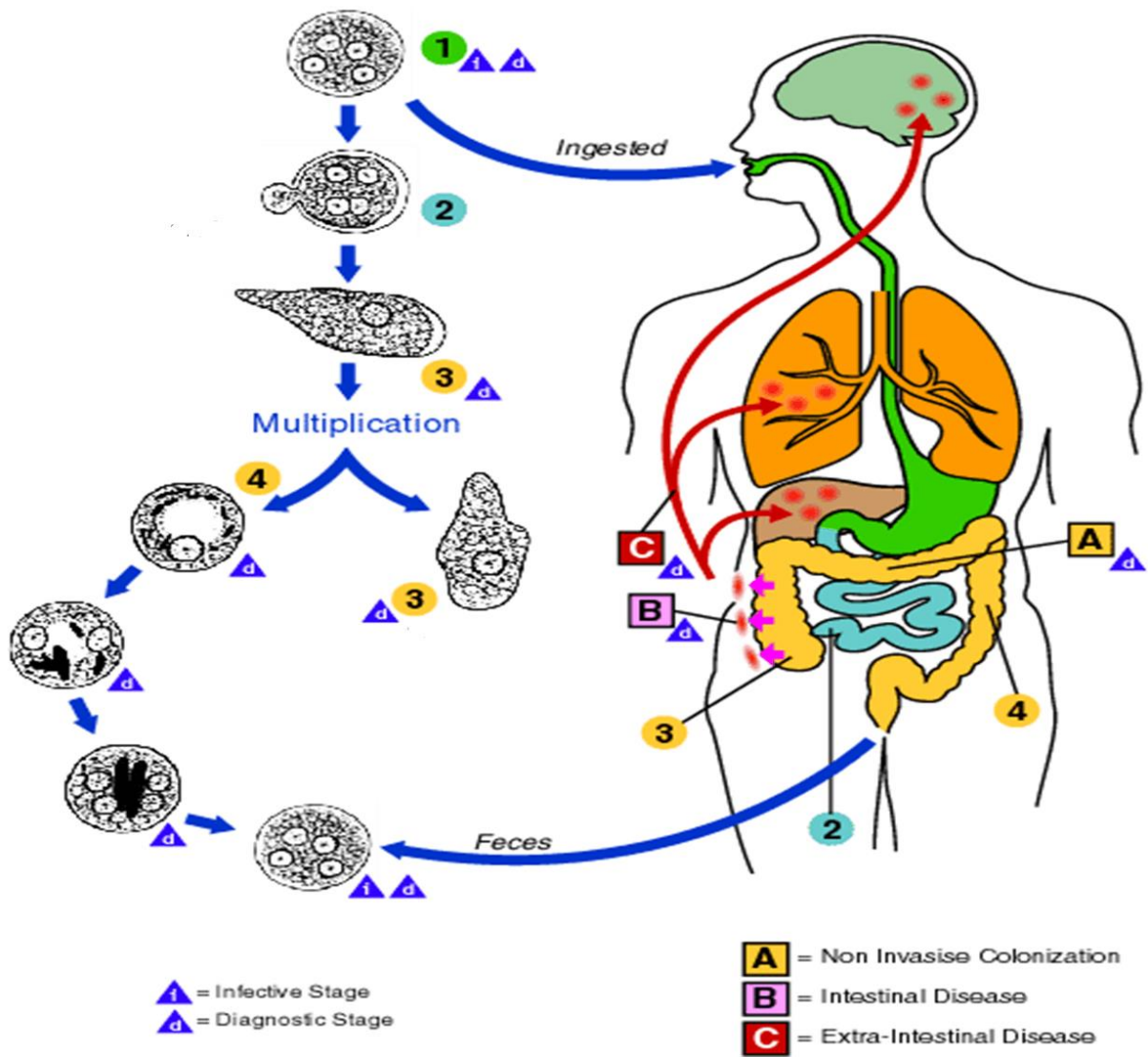
Section B

1. Identify the Life cycle stages of Malaria Parasite

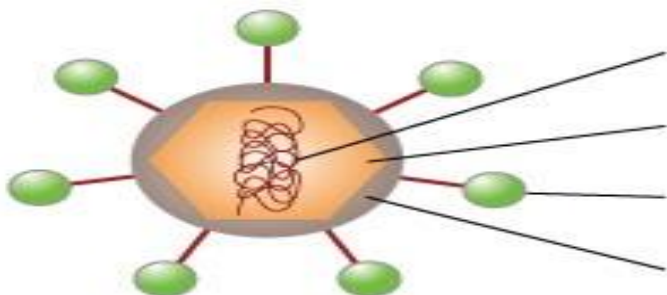


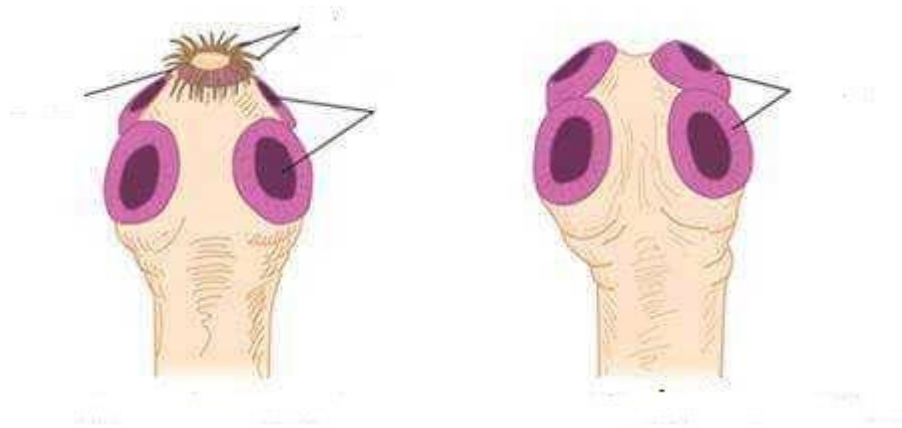
2. Fill in the blanks for the life cycle given.



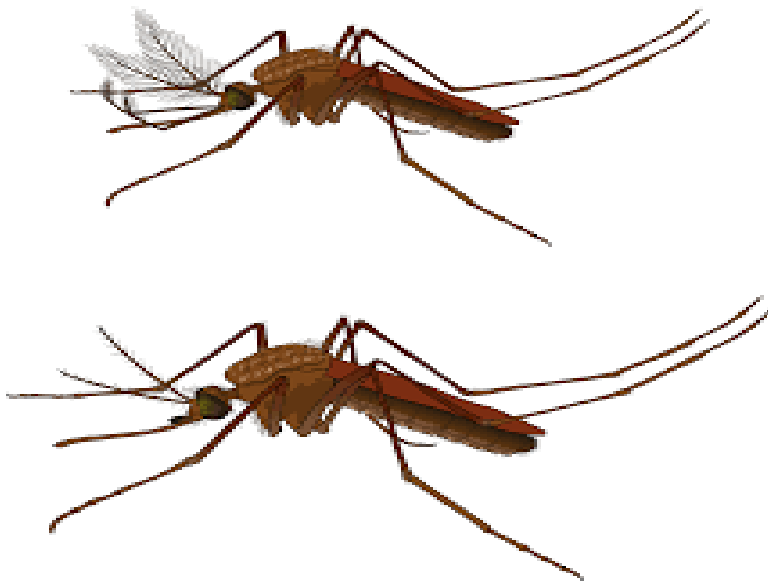


3. Label The dengue virus structure

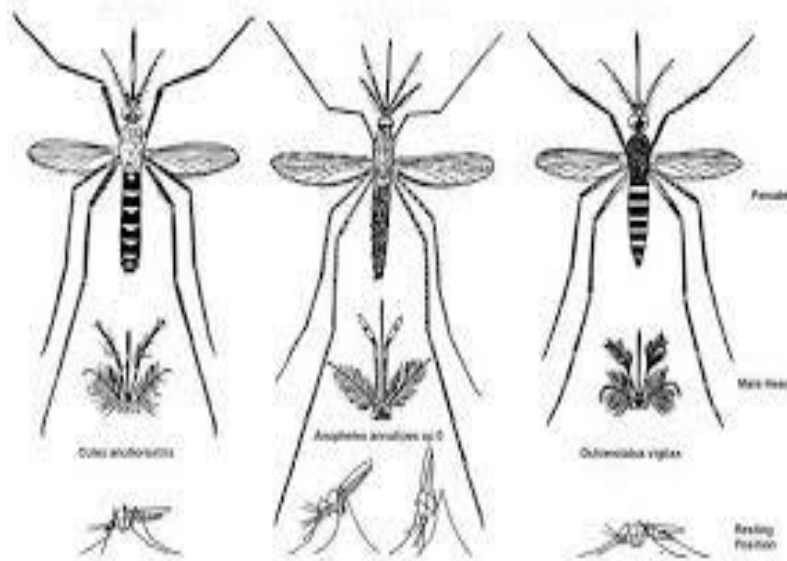




4. Identify the following mosquitos which one is Male and Female



5. Name the different species of mosquitos



Section C

1. Complete the assignment on writing on taeniasis
 - A. Introduction (Describe the worms T.Solium & T.Saginetta)
 - B. Signs & Symptoms
 - C. Cause
 - D. Pathophysiology
 - E. Diagnosis
 - F. Prevention

2. Complete your Power Point presentation of your selected topics as we will be starting the presentations from 1st April as part for your internal assessment for my subject.

PPT should contain the following points

- I. Introduction
- II. Epidemiology
- III. Cause
- IV. Pathophysiology
- V. Diagnosis
- VI. Precautions